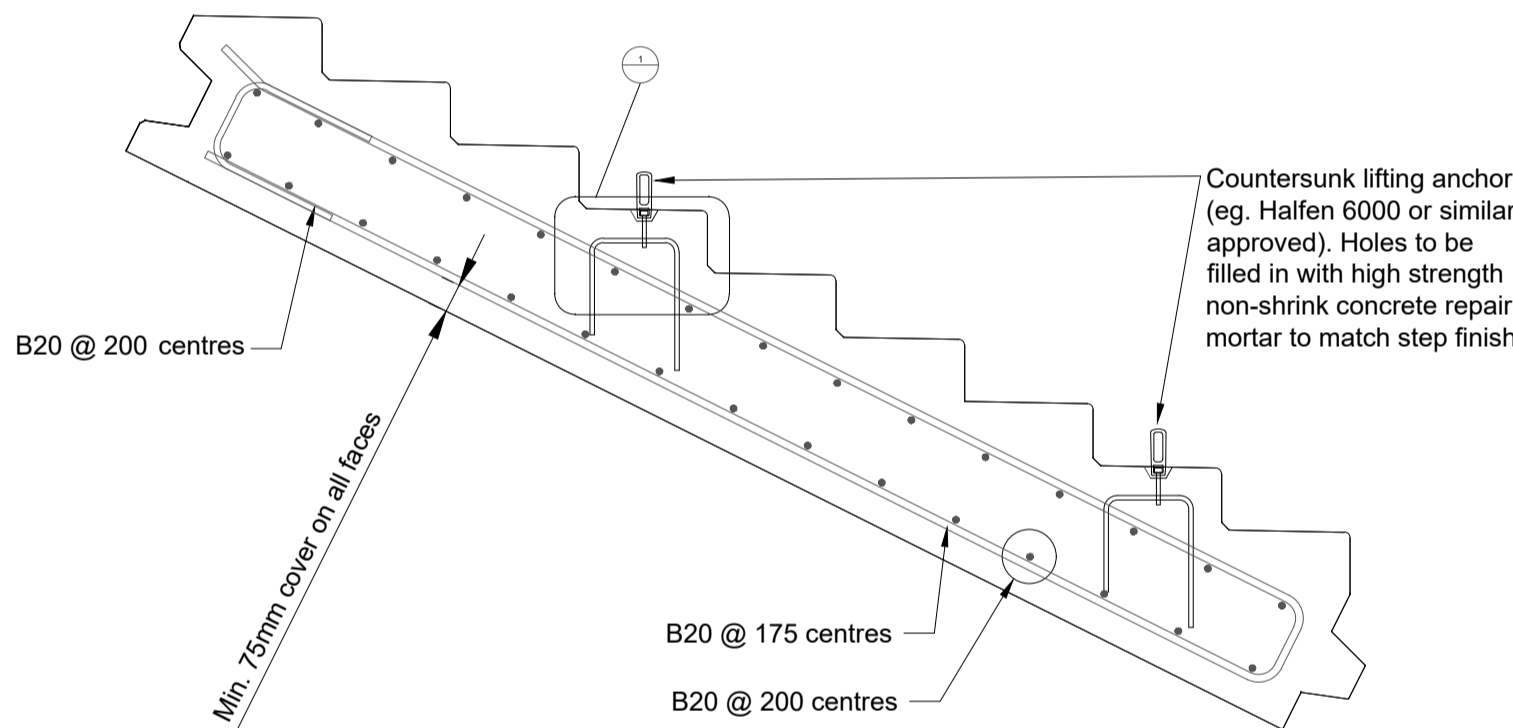
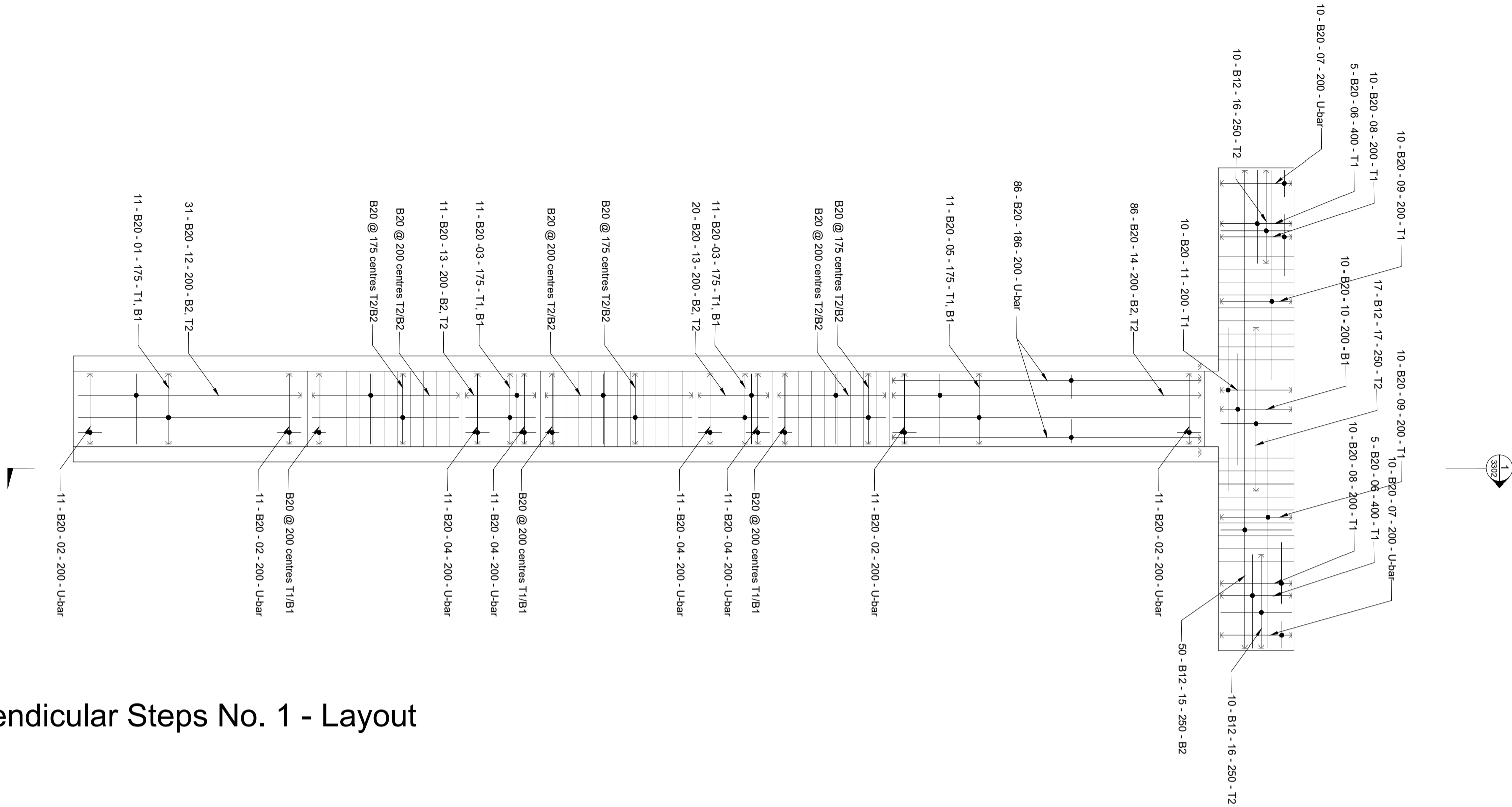
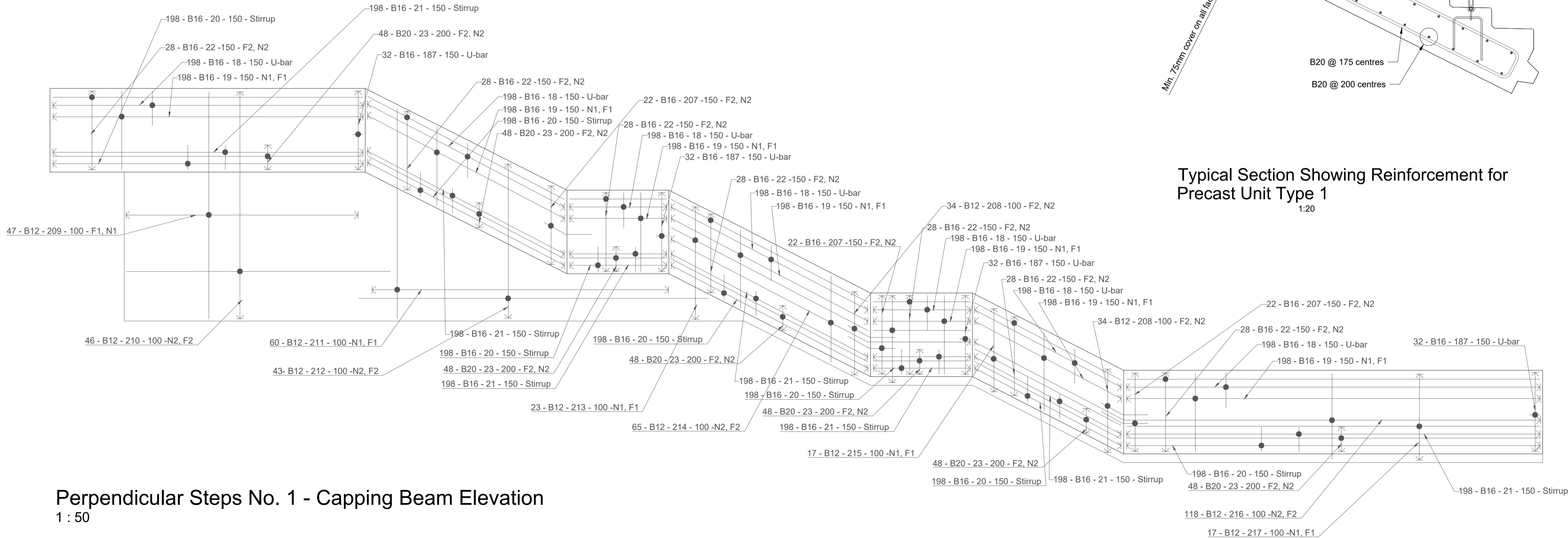


Perpendicular Steps No. 1 - Layout
1 : 100



Typical Section Showing Reinforcement for
Precast Unit Type 1
1:20



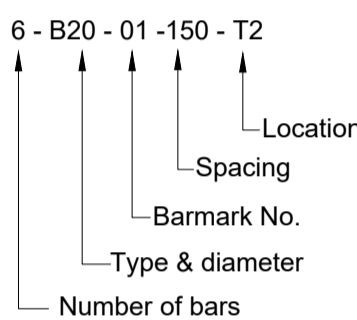
Perpendicular Steps No. 1 - Capping Beam Elevation
1 : 50

- Notes
1. Reinforced concrete to be Grade C35/45 in accordance with the Specification unless noted otherwise.
 2. No lifting points in visible faces when in the installed arrangement.
 3. Nominal cover to reinforcement is 75mm unless noted otherwise.
 4. All reinforcement to be Grade 500 to BS4449:2005.
 5. All reinforcement to be cut and bent to BS8666:2005.
 6. Minimum reinforcement laps to be 35 times bar diameter.

Key to Symbols

Reinforcement Abbreviations

B1	Bottom Face Outer Layer
B2	Bottom Face Second Layer
T1	Top Face Second Layer
T2	Top Face Second Layer
NF	Near Face
N2	Near Face Second Layer
F1	Far Face Outer Layer
F2	Far Face Second Layer
EF	Each Face
AW	Alternate With
ABR	Alternate Bars Reversed
STG	Staggered



Reference drawings

415437-MMD-00-XX-DR-C-3500 - Coastal General Arrangement Plan
415437-MMD-00-XX-DR-C-3520 series - Sections & details
415437-MMD-00-XX-DR-C-3540 series - RC details

C01	23.01.26	RW	Tender Issue	GWM	SS
P01	21.01.26	RW	Tender Issue for Client Acceptance	GWM	SS
Rev	Date	Drawn	Description	Ch'k'd	App'd

Status Stamp

Tender Issue



First Floor, Bryn Eirias
Abergele Road
Colwyn Bay
LL29 8BY
United Kingdom
T +44 (0)1492 534601
W mottmac.com

Client



Title
Ph.3 - Old Colwyn Promenade Coastal
Defence & Active Travel Improvements
Perpendicular Steps No. 1 & Cross over
steps No. 1 Layout and Details
RC Details - Sheet 1 of 2

Designed	P.C.O.	Eng. Check	G. Mitchell	
Drawn	R. Williams	Coordination	G. Mitchell	
Dwg. Check	G. Mitchell	Approved	S. Smith	
MMD Project Number	415437	Scale at A1	As indicated	Security STD
Suitability Description	Tender Issue	Suit. Code	A4	
Drawing Number	415437-MMD-00-XX-DR-C-3540	Rev	C01	